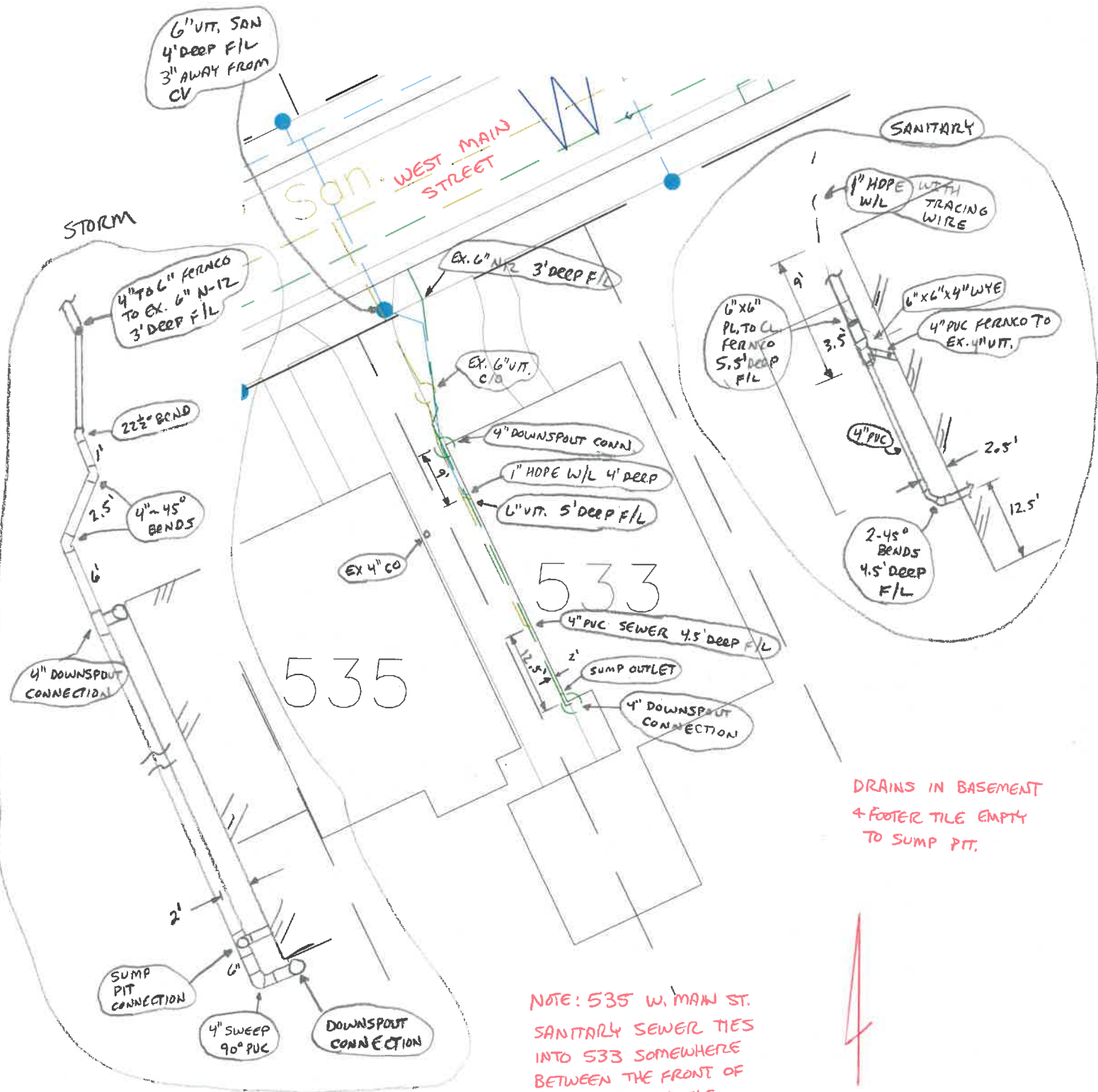


DATE: 6-7-16

INSTALLED BY: JA HILLIS / MOORE PLUMBING

INSPECTED BY: MARTY CROSSLAND

533 WEST MAIN STREET



DRAINS IN BASEMENT
+ FOOTER TILE EMPTY
TO SUMP PIT.

NOTE: 535 W. MAIN ST.
SANITARY SEWER TIES
INTO 533 SOMEWHERE
BETWEEN THE FRONT OF
THE HOUSES AND THE
SEWER MAIN.

